

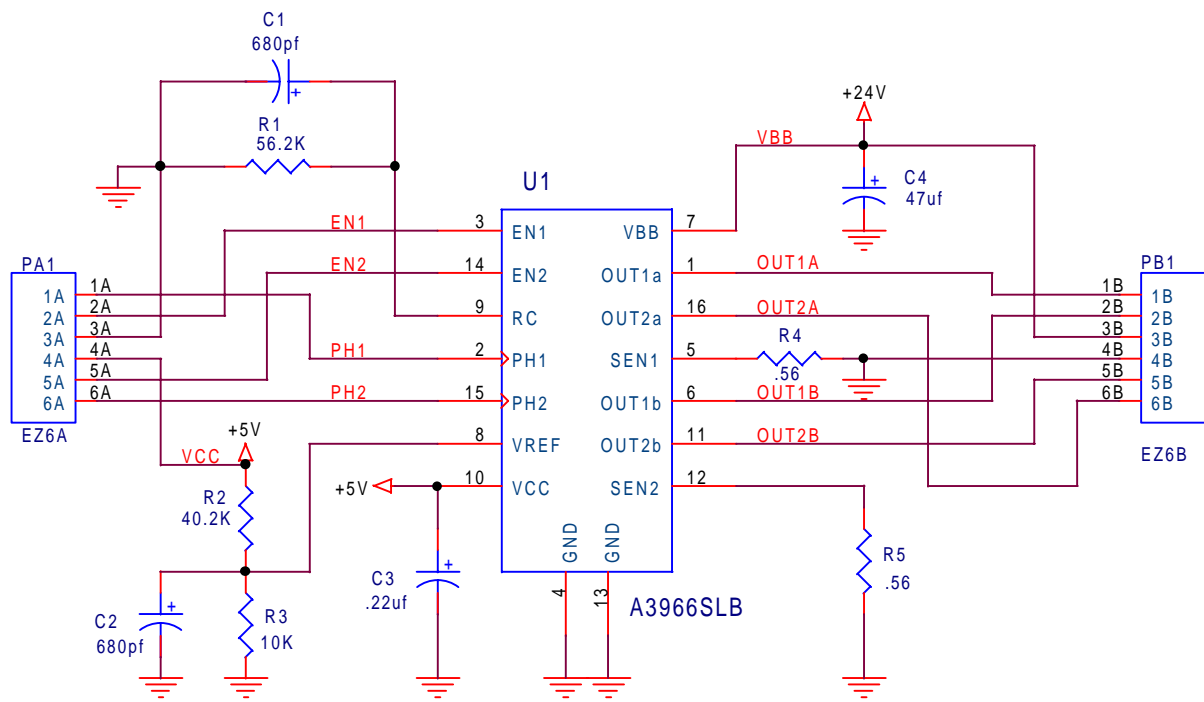
(Eng. Prod) Status >	P	P												
DESIGN COVER SHEET Rev.	OI	A												

DWG/DOC No.	size	dsk	NAME, DESCRIPTION	Revisions																
-000	A		ASSEMBLY DWG	1	2															
-000-BOM	A		BOM	1	1															
-000-SCH	A		SCHEMATIC	1	1															
-000-SM1	A		SOLDER MASK COMP	1	2															
-000-SM2	A		SOLDER MASK CKT	1	2															
-000-SS1	A		SILK-SCREEN COMP	1	2															
-000-SS2	A		SILK-SCREEN CKT	1	2															
-000-CU1	A		COPPER COMP	1	2															
-000-CU2	A		COPPER CKT	1	2															
-000-FAB	A		FABRICATION	1	2															
-000-DRL		3.5	DRILL DATA DISK	1	2															
-000-APT		3.5	APITURE TABLE	1	2															

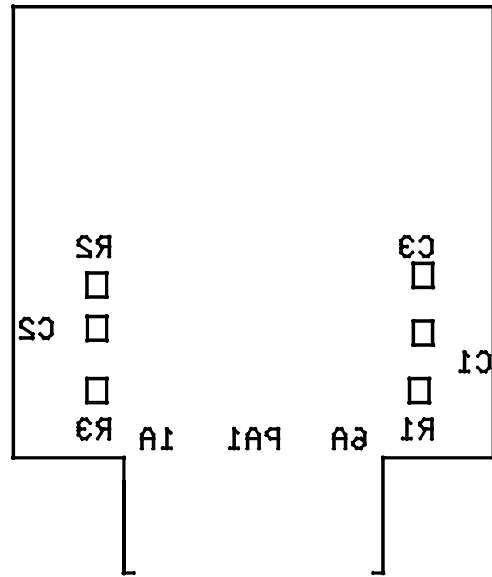
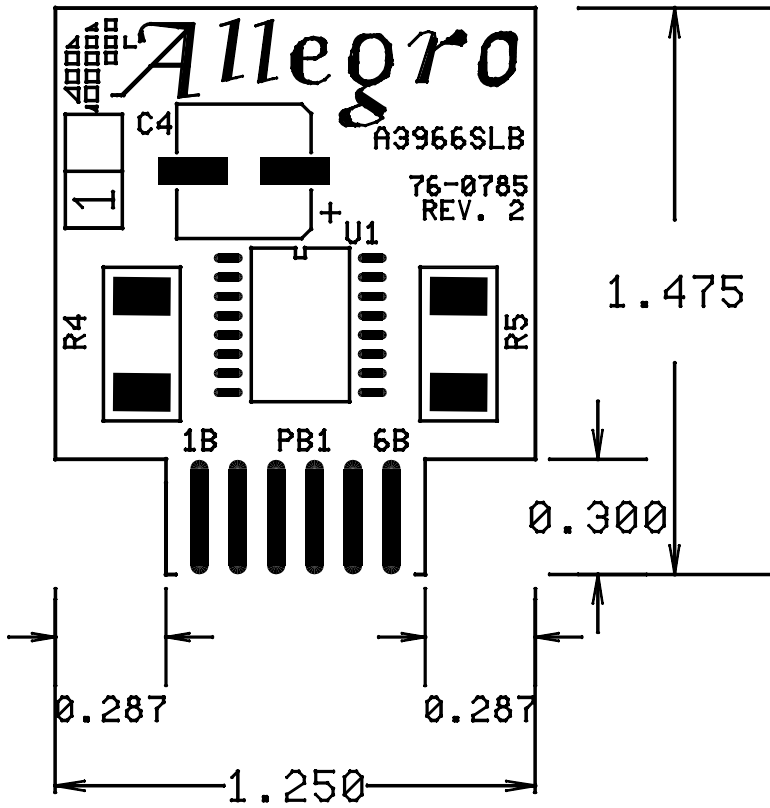
ORIGINATOR: JOYCE ROCHE

TE APPROVAL:

C:\Orcad\760785\Cvs_c

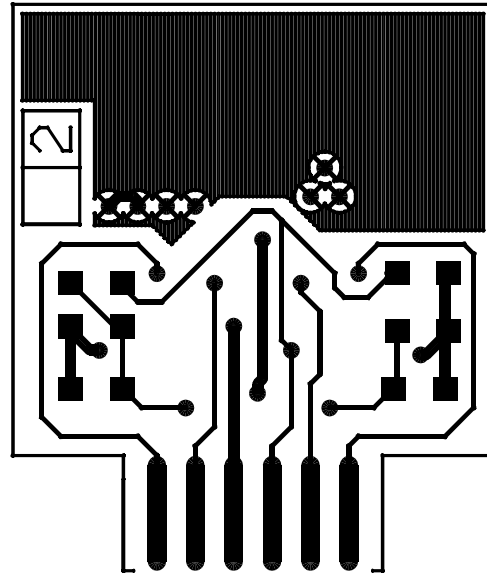
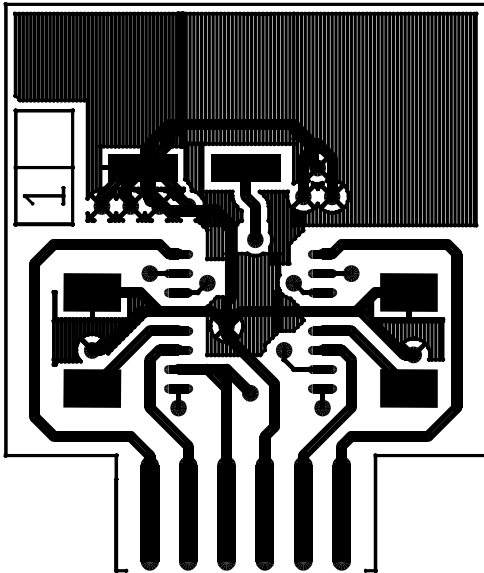


ORIGINATOR: JOYCE ROCHE		
Title BOARD, DEMO, A3966SLB		
Size A	Document Number 76-0785-000-SCH	Rev 1
Date:	Thursday, October 22, 1998	Sheet 1 of 1



COPPER COMPONENT

COPPER CIRCUIT



BOX 15036
WORCESTER, MA 01615-0036

TITLE BOARD, DEMO, A3966SLB

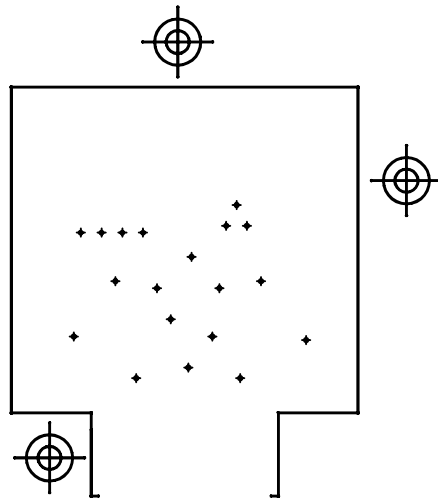
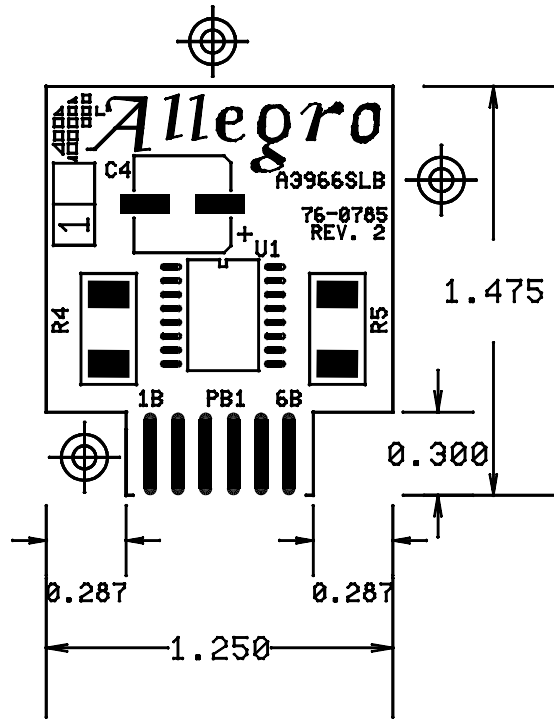
DRAWING NO. 76-0785-000

ISSUE 2

FILENAME C:\ORCAD\760785\ASSY.DWG

SIZE A SCALE NONE DATE NOV. 6, 1998

SHEET 1 of 1



Component Side/Solder Side Holes				
SYMBOL	TOOL	SIZE	QTY	PLATED
⊕	T1	0.0300	19	YES
Total			19	



BOX 15036
WORCESTER, MA 01615-0036

TITLE BOARD, DEMO, A3966SLB

DRAWING NO. 76-0785-000-FAB

ISSUE 2

FILENAME C:\ORCAD\760785\FAB.DWG

SIZE A

SCALE NONE

DATE NOV. 6, 1998

SHEET 2 of 2

76-0785-000-BOM

Revision: 1

Allegro MicroSystems

Bill Of Materials

Page 1 OF 1

Item	Qty	Reference	Part	Description	Stock Number
1	2	C2,C1	680pf	Murata, 6C0G681J50V Surface Mount Cap	EC-CSURF-0025
2	1	C3	.1uf	Murata, 6X7R104K50V Surface Mount Cap	EC-CSURF-0052
3	1	C4	47uf	Panasonic, ECE-V1VA470P VA Series 35V SMT Cap	
4	1	R1	56.2K	Dale, CRCW1206-101 SMT RESISTOR	
5	1	R2	40.2K	Dale, CRCW1206-101 SMT RESISTOR	
6	1	R3	10K	Dale, CRCW1206-101 SMT RESISTOR	
7	2	R5,R4	.56	Panasonic, ERJ-1WRQJxxx 1w, 2512, 5%, SMT RESISTOR	
8	1	U1	A3966SLB	Allegro, Dual Full-bridge PWM Motor Driver 16-lead batwing SOIC	

ORIGINATOR: JOYCE ROCHE

TE APPROVAL: _____

GERBER FILES WILL BE PROVIDED.

---[FABRICATION NOTES]-----

1. Tolerances on board outline are +/- 10 mils.
2. This board is 2 layers. Layer 1 is component side, layer 2 is circuit side of board.
3. Material shall be per MIL-S-13949, REV G .062 C1/C1 A1A.
4. Vender shall be U. L. approved to a minimum category of 94VO.
5. Material shall be U. L. approved to a minimum category of 94VO.
6. Minimum allowable annular ring on plated-through holes shall be .005".
7. Line width reduction due to pinholes, nicks, or line shrinkage shall be 30% max.
8. Minimum copper plate in plated-through holes shall be .001". After plating the surface, copper shall have a total thickness of 2 ounces.
9. All conductors shall be 60/40 tin/lead plated to a total thickness of .0004 to .0006". Maximum deviation of composition shall be 50/50.
10. Tin/lead plating shall be reflowed in all cases, unless otherwise specified, reflow method shall be at vendor's option.
11. Blue solder mask both sides.
12. Use white epoxy ink on silk-screen.
- 13. Edge fingers shall be gold plated to a total thickness of .00005.**