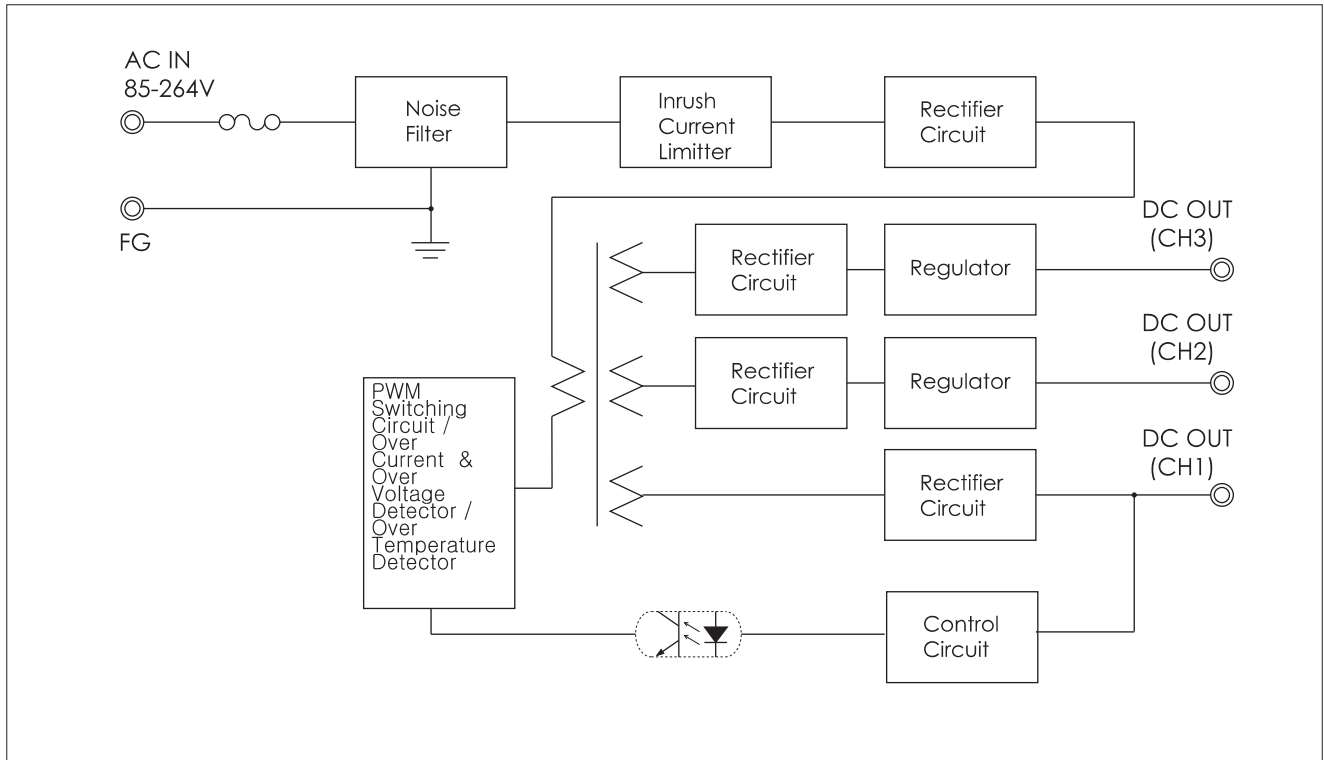
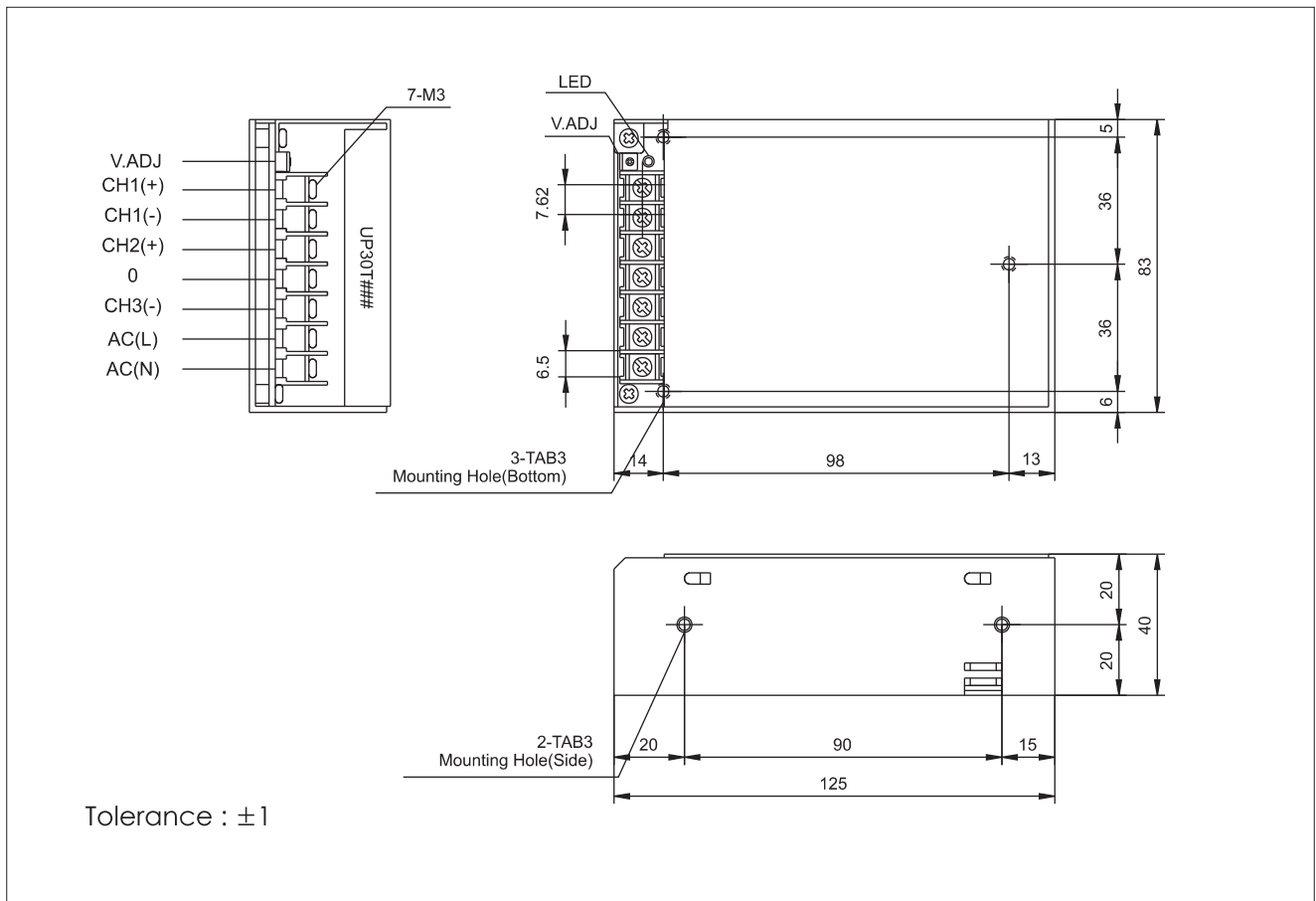


30T Series

BLOCK DIAGRAM



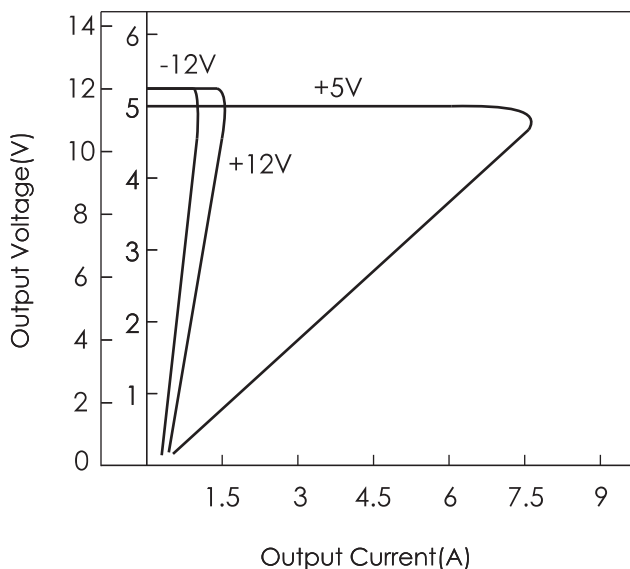
DIMENSIONS(UNITS : MM)



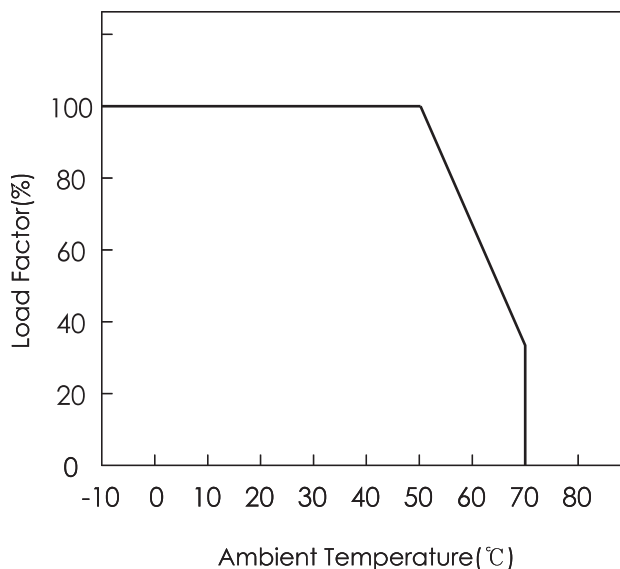
S.M.P.S

23. 30T Series (30TACC)

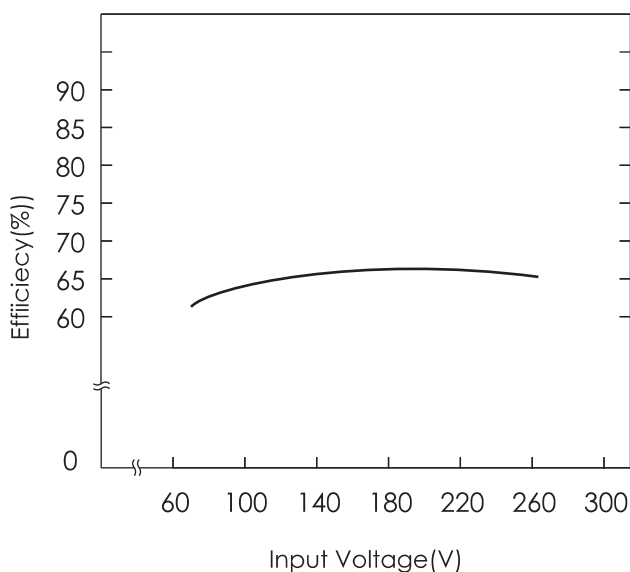
A. OVER CURRENT CHARACTERISTICS



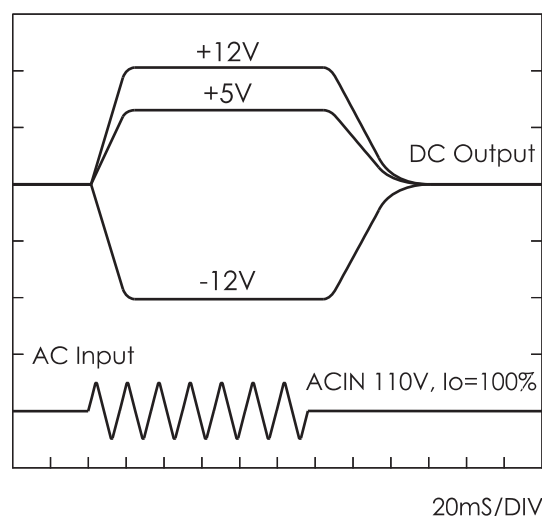
B. DERATING CHARACTERISTICS



C. EFFICIENCY CHARACTERISTICS

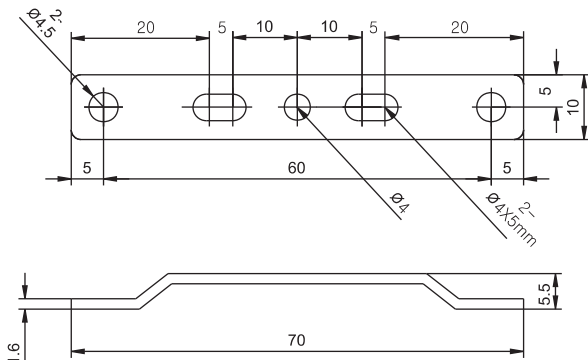
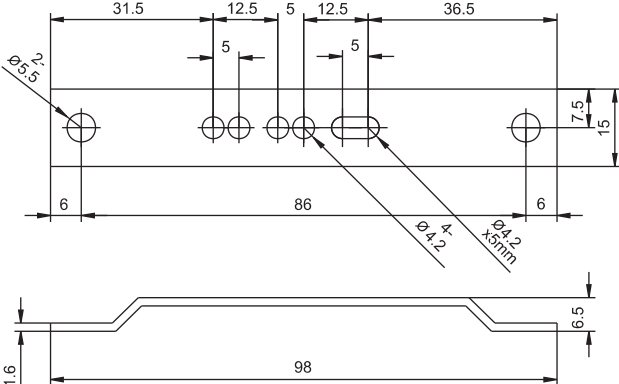
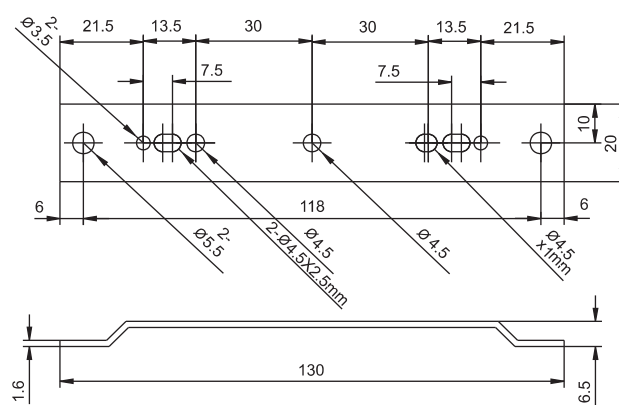


D. RISING/FALLING TIME CHARACTERISTICS



S.M.P.S

BRACKET

MODEL	APPLICATION	DIMENSIONS(UNIT:mm)
BRACKET-A	15S Series 30S Series 50S Series 75S Series 100S Series 150S Series 200S Series 220S Series 15D Series 30D Series 50D Series 15T Series 30T Series 50T Series	 <p>Technical drawing of Bracket A showing top and side views. The top view shows a rectangular plate with a total width of 70 mm and a total length of 60 mm. It features five circular holes and two rectangular slots. The hole diameters are $\phi 4.5$ and $\phi 4$. The slot widths are $2 \times \phi 4.5$ mm. Dimensions include 20 mm between the first and second holes, 5 mm between the second and third holes, 10 mm between the third and fourth holes, 5 mm between the fourth and fifth holes, and 20 mm from the fifth hole to the right edge. The side view shows a thickness of 1.6 mm and a height of 5.5 mm.</p>
BRACKET-B	300S Series 400S Series	 <p>Technical drawing of Bracket B showing top and side views. The top view shows a rectangular plate with a total width of 98 mm and a total length of 86 mm. It features four circular holes and one rectangular slot. The hole diameters are $\phi 5.5$ and $\phi 4.2$. The slot width is $\phi 4.2 \times 3$ mm. Dimensions include 31.5 mm from the left edge to the first hole, 12.5 mm between the first and second holes, 5 mm between the second and third holes, 12.5 mm between the third and fourth holes, and 36.5 mm from the fourth hole to the right edge. The side view shows a thickness of 1.6 mm and a height of 6.5 mm.</p>
BRACKET-C	500S Series 600S Series 650S Series 750S Series 850S Series 1000S Series 1200S Series 1500S Series	 <p>Technical drawing of Bracket C showing top and side views. The top view shows a rectangular plate with a total width of 130 mm and a total length of 118 mm. It features six circular holes and two rectangular slots. The hole diameters are $\phi 3.5$ and $\phi 4.5$. The slot widths are $2 \times \phi 4.5 \times 2.5$ mm. Dimensions include 21.5 mm from the left edge to the first hole, 13.5 mm between the first and second holes, 7.5 mm between the second and third holes, 30 mm between the third and fourth holes, 7.5 mm between the fourth and fifth holes, 13.5 mm between the fifth and sixth holes, and 21.5 mm from the sixth hole to the right edge. The side view shows a thickness of 1.6 mm and a height of 6.5 mm.</p>

S.M.P.S