



Intel[®] StrongARM^{*} SA-1110 Development Board

Cable Drawings

May 2000

Phase 5

Order Number: 278331-002



Information in this document is provided in connection with Intel® products. No license, express or implied, by estoppel or otherwise, to any intellectual property rights is granted by this document. Except as provided in Intel's Terms and Conditions of Sale for such products, Intel assumes no liability whatsoever, and Intel disclaims any express or implied warranty, relating to sale and/or use of Intel products including liability or warranties relating to fitness for a particular purpose, merchantability, or infringement of any patent, copyright or other intellectual property right. Intel products are not intended for use in medical, life saving, or life sustaining applications.

Intel may make changes to specifications and product descriptions at any time, without notice.

The SA-1111 Development Module may contain design defects or errors known as errata which may cause the product to deviate from published specifications. Current characterized errata are available on request.

Contact your local Intel sales office or your distributor to obtain the latest specifications and before placing your product order.

Copies of documents which have an ordering number and are referenced in this document, or other Intel literature may be obtained by calling 1-800-548-4725 or by visiting Intel's website at <http://www.intel.com>.

Copyright © Intel Corporation, May 2000

*Other brands and names are the property of their respective owners.

1.0 Intel® StrongARM* SA-1110 Development Board Cables

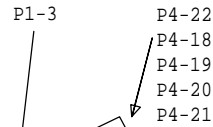
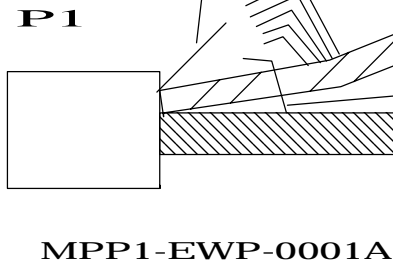
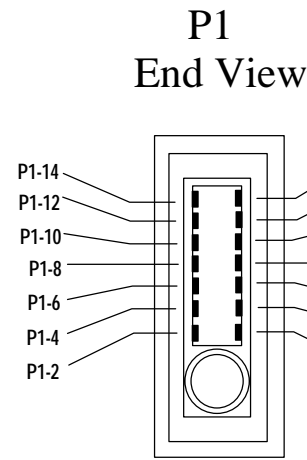
This document contains illustrations of the cables used for the Intel® StrongARM* SA-1110 Development Board (SA-1110 Development Board).

Note: This document and module are for the Phase 5 hardware build of this product. For the latest information and updates, see the hardware release notes that are provided in hardcopy format, and the software readme.txt files that are provided in the software kits.

1.1 Cables

The SA-1110 Development Board uses the base station cable for programming the CPLD and telephony, and uses the video cable for composite video from the SA-1110 Development Board:

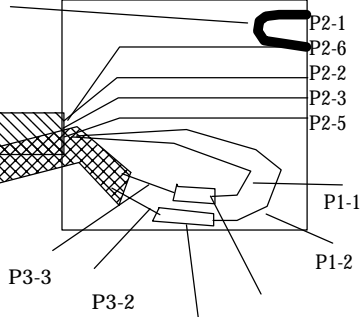
Note:
P1 has One Ground at P1-3.
There are 6 grounds that require termination. Terminate the 6 grounds outside P1, Insulate connection and bring a single wire inside to P1-3.



Twisted Pair Wire
 4 ft / 10 conductor

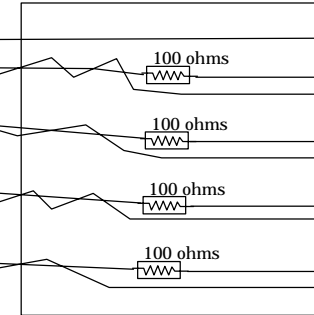
Jumper P2-1 to P2-6.
 Enclose connection in the DSub 9 housing.

P2 DB9 - Female



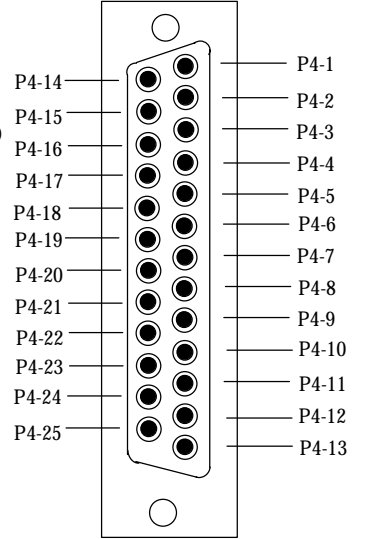
Insulate SPARE1. Enclose in housing.

SPARE1 (SA_WE) P4 - DB25, Male



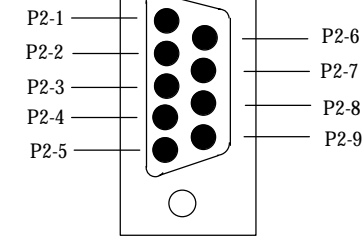
- P4-22 (GROUND)
- P4-11 (SA_TDO)
- P4-21 (GROUND)
- P4-4 (JTAG_TMS)
- P4-20 (GROUND)
- P4-3 (CPLD1_TDI)
- P4-19 (GROUND)
- P4-2 (JTAG_TCK)
- P4-18 (GROUND)

P4 End View



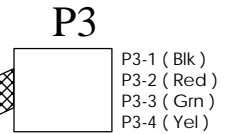
6 ft / 10 Conductor

Insulate Connections
 Telephone cable is routed here.
 Connect P-1 to P3-3. Solder and Insulate
 Connect P-2 to P3-2. Solder and Insulate
 Enclose these connections in the DSub 9 housing.

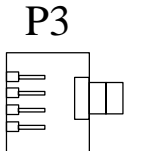


P2 End View

P3 - 4 pin Modular Male



Note: Viewed w/ Tab below



END VIEW

Wire Table

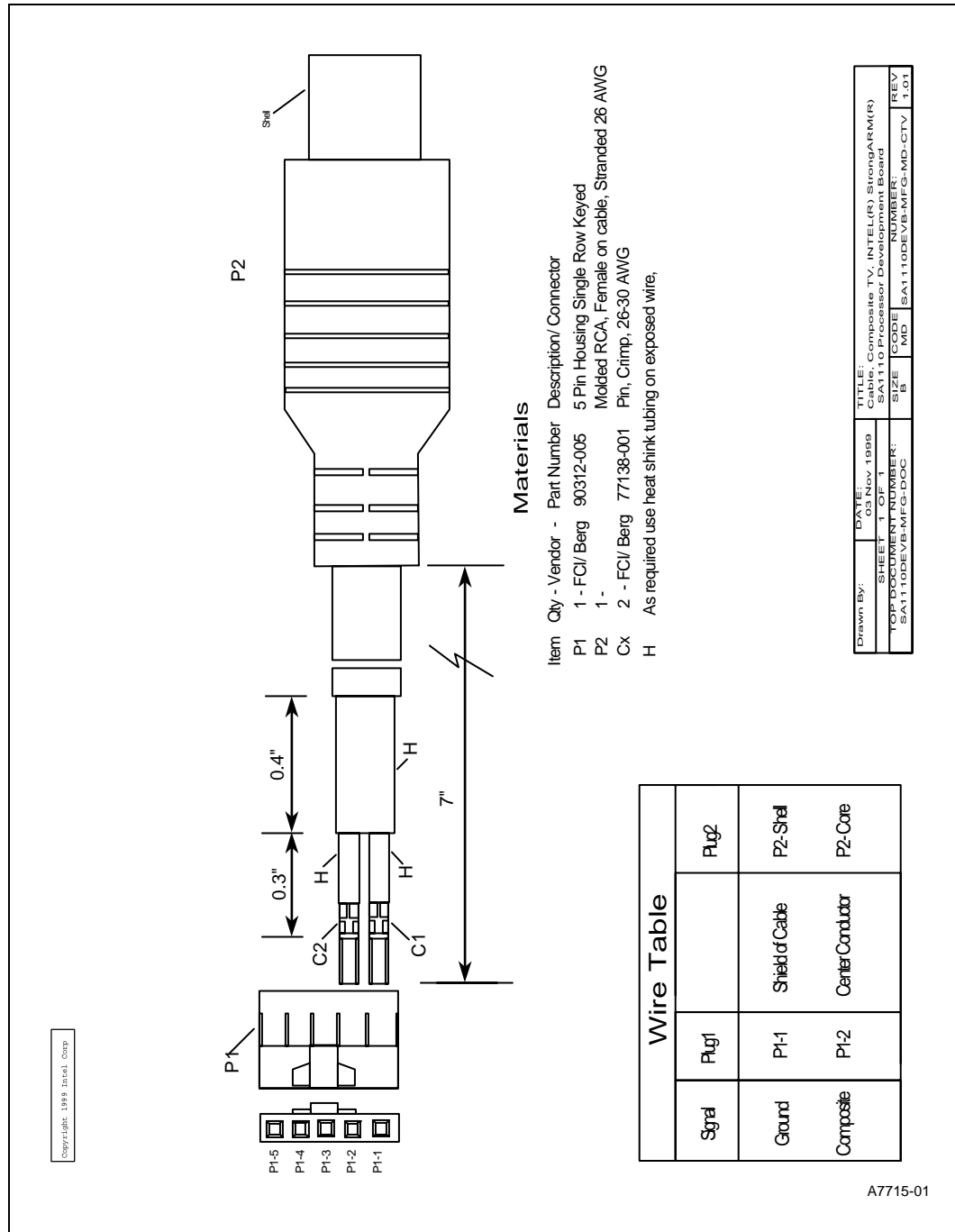
Item	Signal Name	P1 - FCI/Berg	P2 - 9 Pin DSub-Female	P3 - Telephone 4 wire	P4 - JTAG DB25 - Male
1	TIP	P1-1 (Route to P2 and then split at P2 to P3)	P3-3		
2	RING	P1-2 (Route to P2 and then split at P2 to P3)	P3-2		
3	GROUND	P1-3	P2-5		P4 - 21, P4-20, P4-19, P4-18, (Spare 1)
4	JTAG_TCK	P1-4			Mount 100 Ohm Resistor to P4-2, then Wire to Res.
5	RS_RX	P1-5	P2-3		
6	RS_TX	P1-6	P2-2		
7	SA_WE	P1-7			Route to but do not terminate on DB-25 (SPARE 1)
8	RS_RTS	P1-8	P2-8		
9	JTAG_TMS	P1-9			Mount 100 Ohm Resistor to P4-4, then wire to Res.
10	RS_CTS	P1-10	P2-7		
11	CPLD1_TDI	P1-11			Mount 100 Ohm Resistor to P4-3, then wire to Res.
12	RS_DTR	P1-12	P2-6		
13	SA_TDO	P1-13			Mount 100 Ohm Resistor to P4-11, then wire to Res.
14	RS_DSR	P1-14	P2-4		
15	CDC		Jumper P2-1 to P2-6		

Materials

Qty	Loc - Vendor	Connector
1	P1 - FCI/ Berg	14 Pin MPP1-EWP-0001A
1	P2 -	9 Pin D-Sub, Female, Solder type, with case and lock down screws
1	P3 -	4 Pin Modular Plug, Male
1	P4 -	25 Pin D-Sub, Male, Solder type, with case and lock down screws
Qty	- Vendor	Wire
1		Cable 10 Cond, Twisted Pair- 30 AWG
1		Cable Modular, 4 Cond, 26 AWG, Silver
1		Cable, 10 Cond, 26 AWG,
Qty	- Vendor	Miscellaneous
4		Resistor, 100 Ohm, 1/4 watt leaded
1		Solder as required
2		Insulation as required

Part Number ASC-400	DATE : 22 May 2000	TITLE : ISV Cable Base Station INTEL(R) StrongARM(R) SA1110 Processor Development Board		
SHEET 1 OF 1		SIZE B	CODE MD	NUMBER : SA1110DEVB-MFG-MD-ISV
TOP DOCUMENT NUMBER : SA1110DEVB-MFG-DOC				REV 2.1

Figure 2. SA-1110 Development Board Composite TV Cable



intel®

