



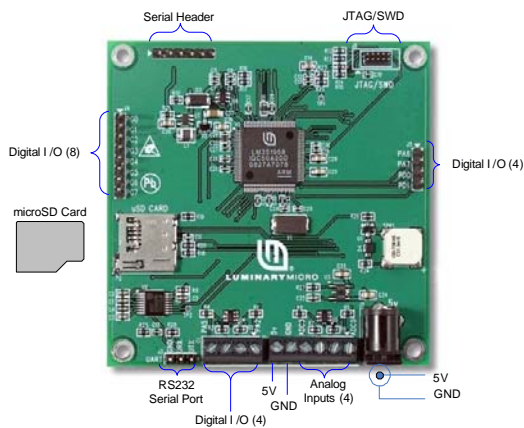
Stellaris® Intelligent Display Module with 3.5" Landscape Display

LUMINARY MICRO

Luminary Micro's Stellaris® Intelligent Display Module with 3.5" Landscape Display (MDL-IDM-L35) offers a complete QVGA touch-screen user interface for control, automation, and instrumentation applications. The MDL-IDM-L35 features several serial, digital, and analog connectivity options for easy implementation as a Human Machine Interface (HMI) touch display panel in an embedded control device. Software development for the RDK-IDM-L35 is simplified by using Luminary Micro's comprehensive graphics library and ARM development tools from ARM tools partners.

Stellaris® IDMs are the first display modules available with the efficient performance and robust integration of an ARM® Cortex™-M3 microcontroller, positioning the modules for use in building access controllers and security systems, intelligent white goods and home appliances, thin clients, and factory automation applications.

Features



The MDL-IDM-L35 ships as a software-customizable module with the following features:

- Bright QVGA LCD touch-screen display
 - 262 K colors, 3.5" QVGA 320 x 240 pixels
 - White LED backlight with resistive touch panel
- Serial connectivity options
 - RS232 serial port with RS232 signal levels
 - UART serial port with TTL signal levels
- High performance microcontroller and large memory
 - 32-bit ARM® Cortex™-M3 core
 - 256 KB main flash memory, 64 KB SRAM
 - microSD card slot
- Power supply
 - 5 V power supply with DC regulator that generates 3.3 V for powering the board

- Easy to customize
 - Includes full source code, example applications, and design files
 - Develop using tools supporting the IDM-L35 from Keil, IAR, Code Sourcery, and Code Red (using a Stellaris evaluation kit or preferred ARM Cortex-M3 debugger)
 - Supported by Luminary Micro Graphics Library and Stellaris® Peripheral Driver Library

Reference Design Kit



In addition to being offered as a stand-alone, ready-for-production module (MDL-IDM-L35), the Stellaris® IDM-L35 is also offered as a complete open-tool reference design kit (RDK-IDM-L35). The RDK ships with everything needed to quickly evaluate the IDM-L35 including:

- Stellaris® Intelligent QVGA 3.5" Touch Panel Module (MDL-IDM-L35) with metal standoffs
- USB to TTL serial cable to simultaneously power the board and connect to the LM3S1958 Stellaris microcontroller via UART0
- JTAG debug adapter for 10-pin fine-pitch connection to a standard 20-pin connector
- Quickstart Guide, User's Manual, Software Reference Manual, Board Data Sheet, source code, BOM, schematics, and Gerber files on CD

Ordering Information

Product Number	Description
MDL-IDM-L35	Stellaris® Intelligent Display Module with 3.5" Landscape Display for Single-Unit Packaging
MDL-IDM-L35-B	Stellaris® Intelligent Display Module with 3.5" Landscape Display for Volume Packaging
RDK-IDM-L35	Stellaris® Intelligent Display Module with 3.5" Landscape Display Reference Design Kit (RDK)

Luminary Micro, Inc. • 108 Wild Basin, Suite 350 • Austin, TX 78746
Main: +1-512-279-8800 • Fax: +1-512-279-8879 • <http://www.luminarymicro.com> • sales@luminarymicro.com

Copyright © 2008 Luminary Micro, Inc. All rights reserved. Stellaris, Luminary Micro, and the Luminary Micro logo are registered trademarks of Luminary Micro, Inc. or its subsidiaries in the United States and other countries. ARM and Thumb are registered trademarks, and Cortex is a trademark of ARM Limited. Other names and brands may be claimed as the property of others.



LUMINARY MICRO



Intelligent Processors by ARM