



## Section 1

# AT90USBKEY Quick Start

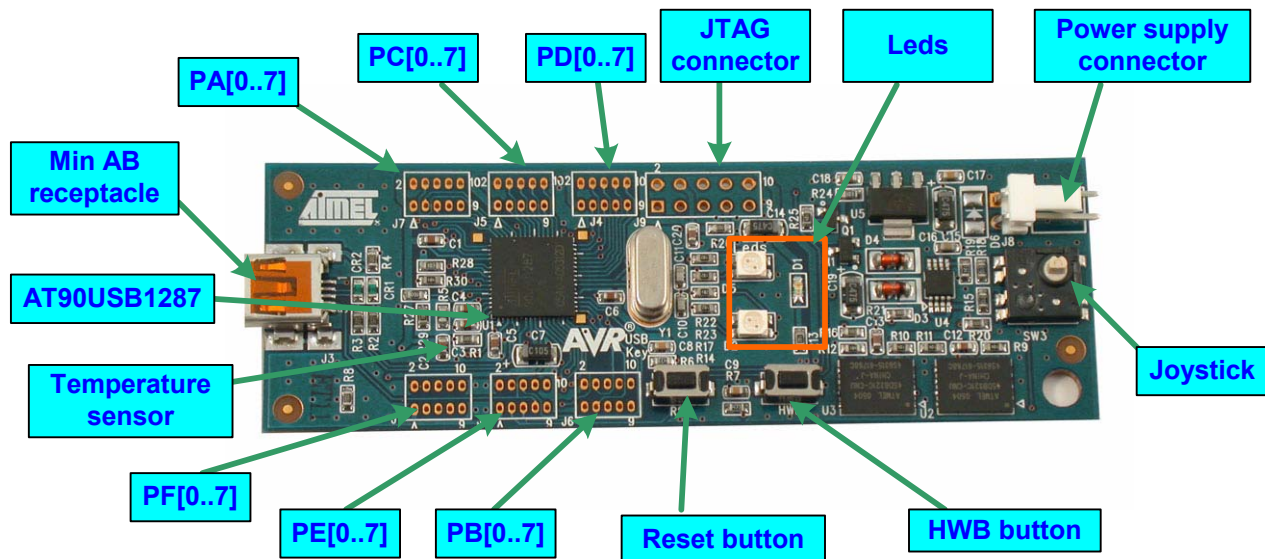
This document describes how to start using the AT90USBKEY. Please read this first to get acquainted with the AVR USB Starter Kit.

The demonstration program allows you to use the AT90USBKEY board as a mouse, Generic HID device, Mass Storage device and a reduce USB host.

- 1.1 Kit Contents**
- 1 AT90USBKEY Board
  - 1 Standard A to mini B cable
  - 1 mini A to receptacle A

**1.2 Evaluation Board Diagram**

Figure 1-1. AT90USBKEY Board

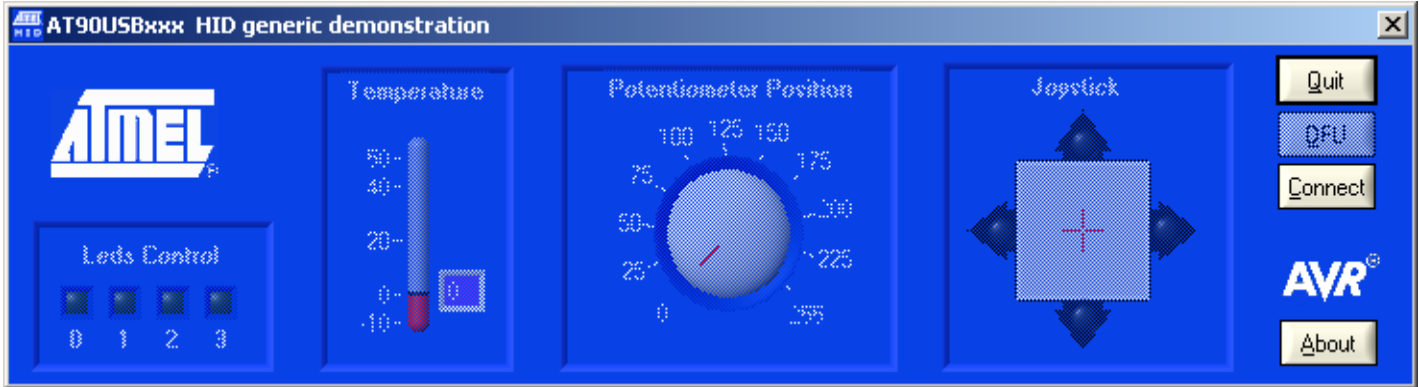


- 
- 1.3 System Requirements**
- PC running Windows® XP/2000/ME/98SE
  - Available USB port
- 

**1.4 Demonstration** The purpose of the AT90USBKEY demonstration program is to use the demonstration board (based on triple enumerations) as a USB mouse, USB Mass Storage device, USB Generic HID device and a reduced USB host (able to manage a USB mouse devices).

- 1.4.1 Mouse demo**
1. Plug the AT90USBKEY to the PC using the standard A to mini B.
  2. To move the mouse pointer in one direction (up, down, left, right..) you have just to move the joystick. The HWB button is used as a left button.
- 1.4.2 Mass Storage Demo**
1. Keep the AT90USBKEY plugged in the PC.
  2. Open your "My Computer" explorer and open the new amovable disk. Now you can transfer files from/to your new USB key!!!  
The Led (D2) will be red while writing on the AT90USBKEY and green while reading.
  3. The files stored inside will be used by the HID Generic application. Please install them on your PC.
- 1.4.3 HID Generic demo** Once you have installed the ATMEL HID application:
1. Launch the *Atmel hid AT90USBxxx* application from your Desktop
  2. Ensure that your AT90USBKEY is connected to the PC
  3. Click on Connect button on the GUI

**Figure 1-2.** ATMEL HID Application



4. Move the joystick to move the mouse pointer in one direction the mouse will be moved at the same time to disable it, click for a while on the joystick button. Do the same to enable it. Click on the Leds Control buttons to turn on/off the AT90USBKEY Leds. The temperature will show the sensor temperature.

- 1.4.4 Reduce Host demo** The reduce host manages only the USB mouse device. To start the demo:
1. Unplug the AT90USBKEY from the PC.
  2. Supply power with a battery.
  3. Connect a mouse to the AT90USBKEY thanks to the mini A to receptacle A cable
  4. Move your mouse to make the Leds blink.
- Enjoy the AT90USBKEY demonstration!