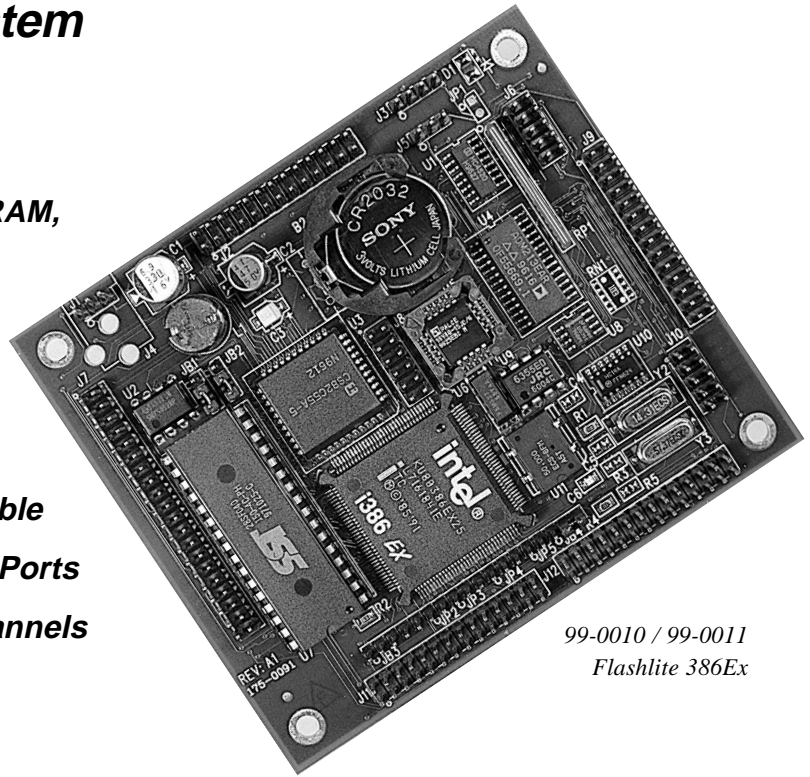


Flashlite 386Ex

With DOS & Flash File System

- 25Mhz Intel 386Ex Processor
- 256K / 512K Bytes RAM Memory
- 32 Pin Dip Socket to accept 512K SRAM, 512K Flash, or DiskOnChip 2000
- 2 Enhanced DMA Channels
- 34 Parallel I/O lines
- PC Compatible Serial Ports
 - 1 - RS232
 - 1 - RS232 / RS485, Software Selectable
- 2 High Speed PC Compatible Serial Ports
- 3 PC Compatible Counter/Timer Channels
- Clock/Calendar
- High-Efficiency Voltage Regulator
- Dimensions 4.2" x 3.6" (106.7mm x 91.4 mm)



99-0010 / 99-0011
Flashlite 386Ex

The *Flashlite 386Ex* is a single board computer based on the Intel **386Ex** processor chip. The **386Ex** is a high-performance, 32-bit, single-chip microcomputer that is capable of protected-mode operation and includes an extensive array of integrated peripherals.

The *Flashlite 386Ex*, like all members of the *Flashlite* family of controllers, comes pre-loaded with DOS and utilities so that you can begin development right away. By connecting one of the *Flashlite 386Ex* serial ports to your PC and running a telecommunications program, you can immediately upload and execute programs compiled for a PC.

The serial ports, counter/timers, interrupt controller, and speaker port on the *Flashlite 386Ex* are fully compatible with the IBM PC at both the hardware and software levels. Additional features such as the RS-485 serial port capability, battery-backed RAM and clock/calendar make the *Flashlite 386Ex* ideal for embedded controller applications.

The *Flashlite 386Ex Development Kit* (99-0012) includes *Flashlite 386Ex* with 512K Ram/512K Flash, Utilities Disk, Console Cable, Connector Kit, 110Vin AC Adapter, and User Manual. (220Vin Development Kit 99-0013 available.)

JK microsystems, Inc.

1902 East Eighth St., Davis, CA 95616
<http://www.jkmicro.com>

Phone (530)297-6073
Fax (530)297-6074

Flashlite 386Ex

Specifications

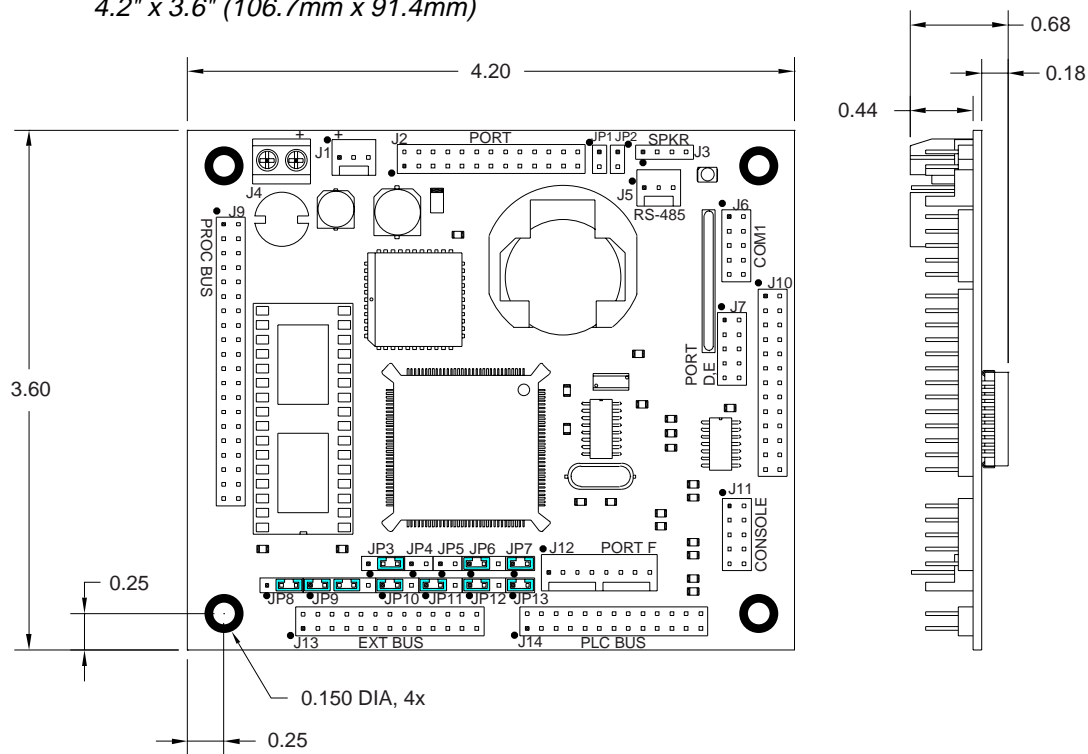
Processor	25Mhz Intel 386Ex
Operating System	XDOS (MS/PC DOS 3.3 compatible)
RAM Memory	256K / 512K Bytes RAM
Flash Memory	512K Bytes Flash Memory
Serial Port 1	RS-232 with 5 handshake lines COM1, address 0x3F8, IRQ 4 115200 baud maximum
Serial Port 2	RS-232 no handshaking or RS-485 half duplex, COM2, address 0x2F8, IRQ 3 115200 baud maximum
Digital I/O	34 Digital I/O
Power Requirements	7 to 34 Volts DC 1.8 Watts, typical
Current Consumption	260mA at 7 Volts Input 150mA at 12 Volts Input 75mA at 24 Volts Input
Humidity	5 - 90 %, non-condensing
Temperature	-20° to +85° C
Weight	3.0 oz (85 gm)
Dimensions	4.2" x 3.6" (106.7mm x 91.4mm)

Connectors and Jumpers:

J2	Digital I/O Ports ABC
J3	Speaker
J4	Power
J5	RS485
J6	Com1
J7	Digital I/O Port D
J9	Processor Bus
J10	Host Parallel
J11	Console
J12	Digital I/O Ports E
J13	Extended Bus
J14	PLC Bus

Expansion Options:

- 32 pin DIP socket to accept 512K SRAM, 512K Flash or M-systems DiskOnChip 2000 Flash Disk (2-144 MB)



JK microsystems, Inc.

1902 East Eighth St., Davis, CA 95616
<http://www.jkmicro.com>

Phone (530)297-6073
 Fax (530)297-6074